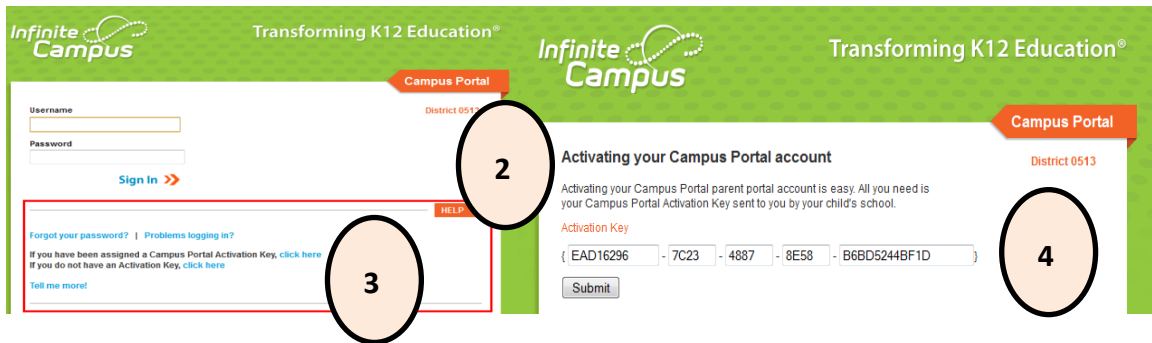


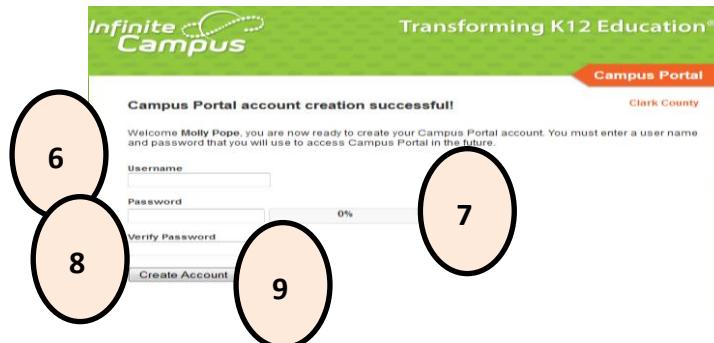
Parent/Guardian–How to Access Campus Portal

Every parent/guardian is given a unique activation key to access the Campus Portal. If you have not been provided your activation key, please contact the Portal Liaison at your child’s school. Below are the steps to create your Campus Portal account.

1. Enter the following web address into your browser: **campusportal.ccsd.net**
2. Click **Help**
3. Select the “[click here](#)” link after the phrase, “**If you have been assigned a Campus Portal Activation Key**”



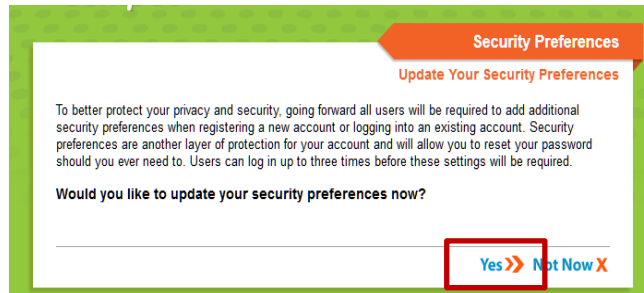
4. Enter your Activation Key. Your activation key will contain the letters A-F and digits 0-9
5. Click **Submit**
6. Enter a Username. Your Username will need to be unique and something easy to remember. For example, Jane Doe might use:
 jane.doe janedoe ms.jdoe jdoe@myemail.com
7. Enter a strong Password. The Password must be at least eight characters long and contain at least **three** of the following:
 - a. A capital letter (A, B, C, ...)
 - b. A lowercase letter (a, b, c, ...)
 - c. A number (1, 2, 3, ...)
 - d. A symbol (% , # , & , ...)
8. Re-enter your Password in the **Verify Password** field
9. Click **Create Account**



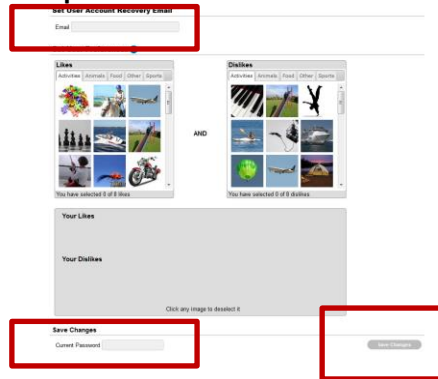
All Campus Portal users (except CCSD staff using his/her AD credentials) have the ability to change their own password or retrieve a forgotten username or password through the Campus Portal Self-Serve Password Reset process. When signing into Campus Portal a second time or via Account Management, the user is prompted to set up this process.

Listed below are the steps for setting up the **Self-Serve Password Reset** process:

1. Sign in to **campusportal.ccsd.net** using your new Username and Password
2. Click **YES** when prompted to update your security preferences now.



3. Enter an **Email** address to **Set User Account Recovery Email**
(If an email address is not available, the Campus Portal may still be used. The Self-Serve Password Reset feature will not be available and users will be asked, at each sign in, to set User Preferences until preferences and an email are entered.)



4. Select **8 Likes**
5. Select **8 Dislikes**
6. Enter your **Current Password** to save changes
7. Click **Save Changes**

If you have questions about logging into the Campus Portal, or about the information you see in Campus Portal, please contact the Portal Liaison at your child’s school.

PLEASE NOTE: To use the Self-Serve Password Reset feature shown below, you must set up your Security Preferences in Campus Portal. If you have not set up your Security Preferences and are utilizing a mobile device, a message will display indicating, ‘Your account requires attention’. This message is an indicator that your Security Preferences have not been set up. When setting your security preferences, you must use a web browser, not a mobile device.

